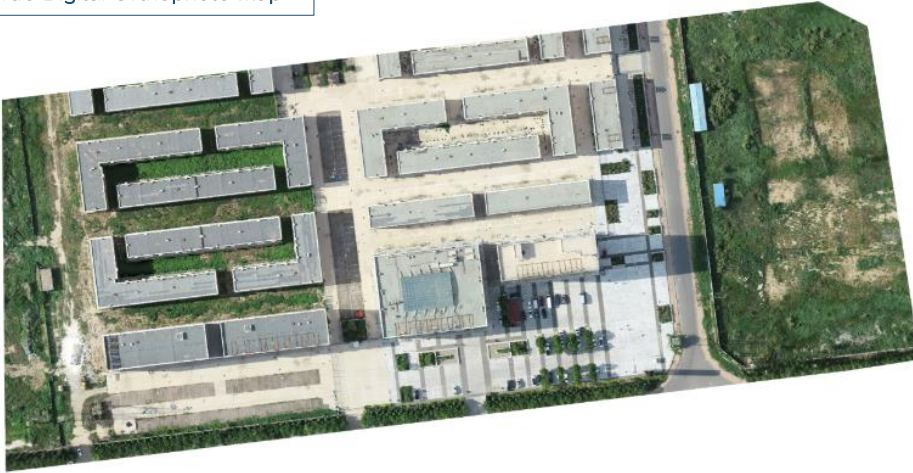


HOW TO READ A DJI TERRA QUALITY REPORT FOR 2D MAPS

DJI Terra Quality Report

TDOM Preview

True Digital Orthophoto Map



Map Information Overview

Item	Value
Input Images	114
Calibrated Images	114
Origin Image GSD	0.026 m
TDOM GSD	0.025 m
Coverage Area	0.070518 sq km
Georeferencing RMSE	0.025986 m
Average Flight Altitude	94.652 m

Map Information Overview

1. Input Images: the number of images which have been captured and input into the software for reconstruction.
2. Calibrated Images: the number of images reconstructed
3. Original Image GSD: the distance between adjacent pixel centers in the original image measured on the ground in meters
4. TDOM GSD: the distance between adjacent pixel centers in TDOM measured on the ground in meters
5. Coverage Area: coverage area in square kilometers
6. Georeferencing RMSE: the root mean square error between solved and original georeferencing coordinates of images in meters
7. Average Flight Altitude: the aircraft's flight height relative to the ground of the surveying area in meters

RTK Status

Status	Number of Images
FIX	114
FLOAT	0
SINGLE	0
NONE	0

RTK Status:

1. FIX: fix solution, where positioning is within centimeter accuracy
2. FLOAT: float solution, where positioning is within decimeter accuracy
3. SINGLE: single solution, where positioning is within meter accuracy
4. NONE: not using RTK

Performance Overview

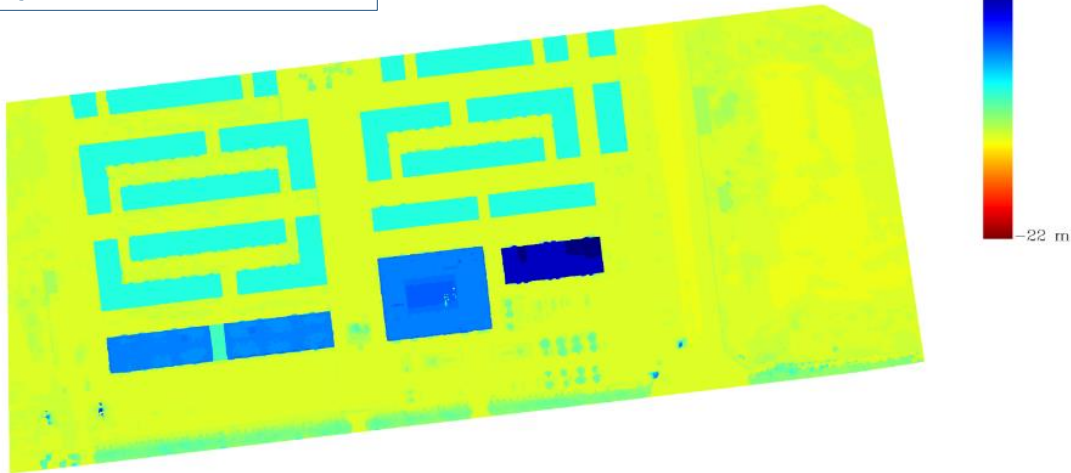
Processing Time (in minutes)

Pipeline	time cost (min)
SFM	2.114
Points Cloud Generate	0.633
TDOM Generate	8.217

1. SFM: running time of structure from motion
2. Point Cloud Generate: running time of point cloud generation
3. TDOM Generate: running time of TDOM generation

DSM Preview

Digital Surface Model Preview



Camera Calibration Information

Camera Internal Parameters

Camera Model FC6310R

Item	Focal	Cx	Cy	K1	K2	K3	P1	P2
Initial	3669.19	2429.76	1872.36	-0.26753600	0.11099200	-0.03293860	-0.00023852	-0.00022180
Optimized	3670.67	2422.28	1870.44	-0.26960275	0.11237525	-0.03314960	-0.00020766	-0.00006694

1. Camera Model: FC6310
2. Initial: internal camera parameters
3. Optimized: optimized internal camera parameters
4. Focal: focal length of camera in pixel
5. Cx, Cy: principal point coordinates of photograph in pixel
6. K1, K2, K3, P1, P2: camera distortion parameters

Process Information

PC Information: CPU/GPU/RAM

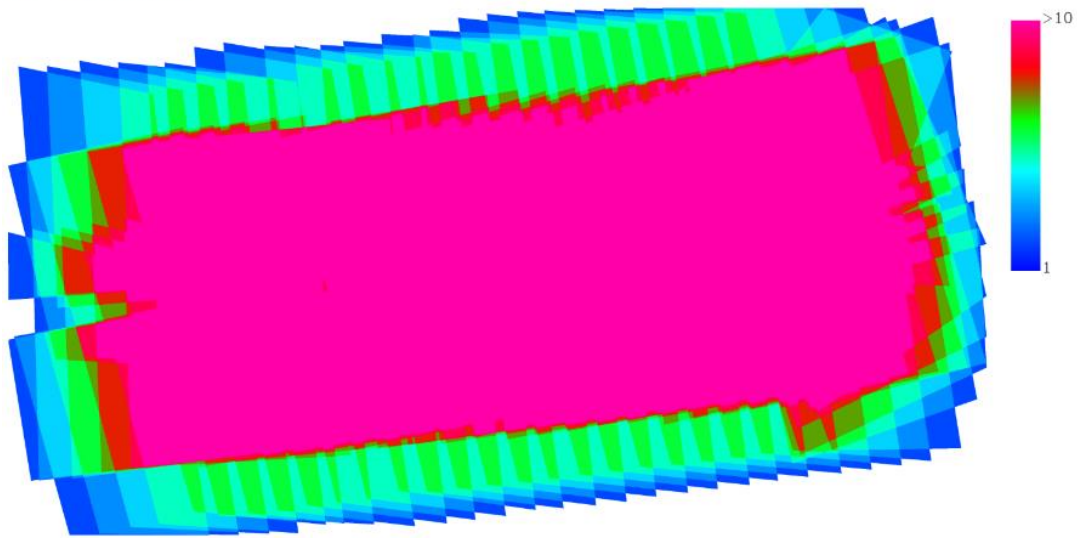
System Information

- CPU: Intel(R) Xeon(R) CPU E5-2690 v4 @ 2.60GHz
- GPU: GeForce GTX 1080 Ti
- RAM: 130993 M

Process Parameters	Value
Map Mode	Urban
Quality Level	High
Coordinate Correct	Yes

1. Mapping Scenarios: Choose among three mapping scenarios: Urban, Field, and Fruit Tree
2. Quality Level: image resolution for reconstruction
High: original image resolution
Medium: 1/2 of original image resolution
Low: 1/3 of original image resolution
3. Coordinate Correction: coordinates of mapping result have / have not been corrected

Scene Overlap Analyze



Scene Overlap Coverage: the number of images covering different areas of the scene. Different color corresponding with different number of images.